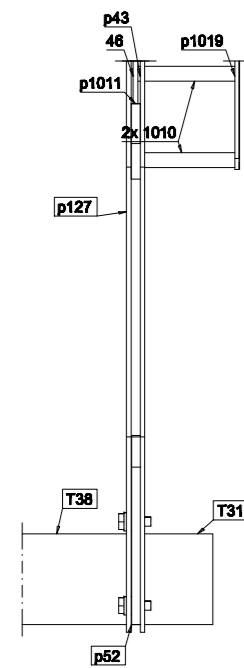
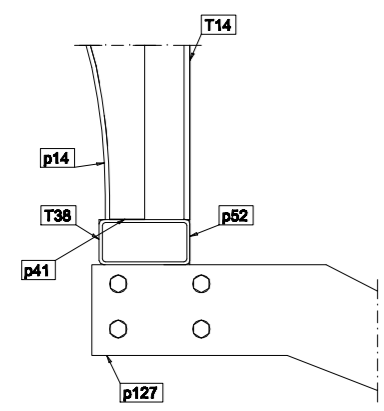


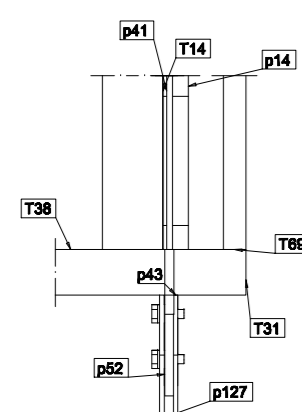
Nodo pos. B01.e



Nodo bordo impalcato - Pos. B01 - 03

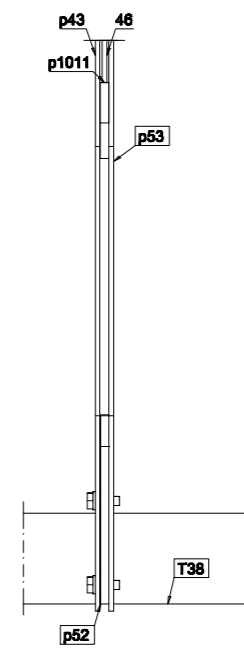


Nodo bordo impalcato - Pos. B01 - 02

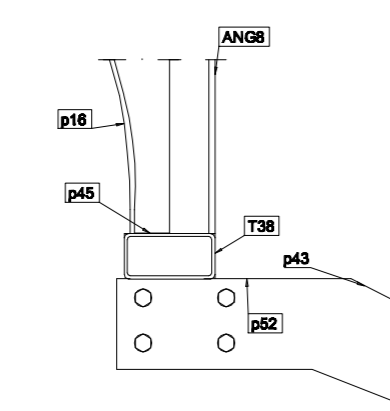


Nodo bordo impalcato - Pos. B01 - 01

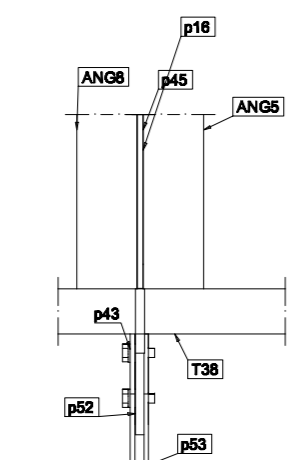
Nodo pos. B02.e



Nodo bordo impalcato - Pos. B02 - 03

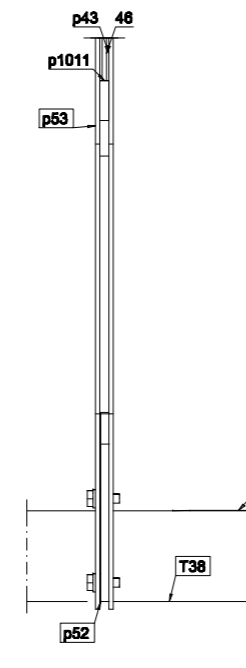


Nodo bordo impalcato - Pos. B02 - 02

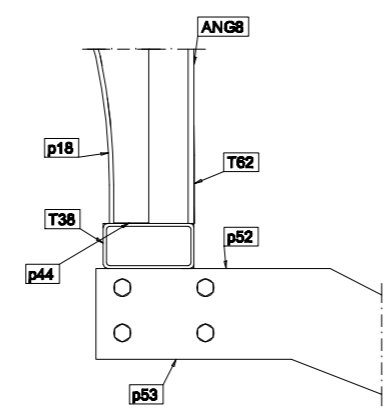


Nodo bordo impalcato - Pos. B02 - 01

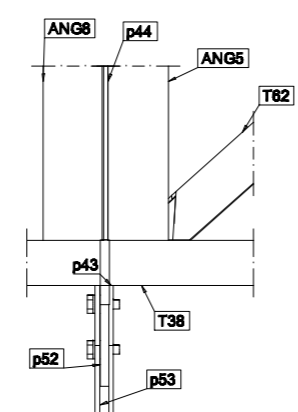
Nodo pos. B03.e



Nodo bordo impalcato - Pos. B03 - 03

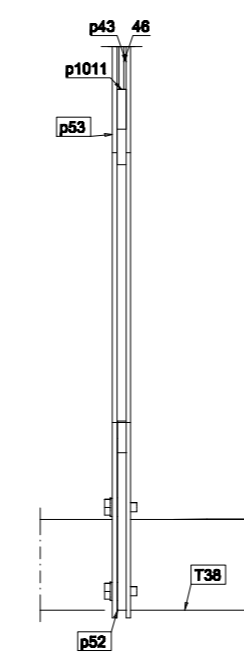


Nodo bordo impalcato - Pos. B03 - 02

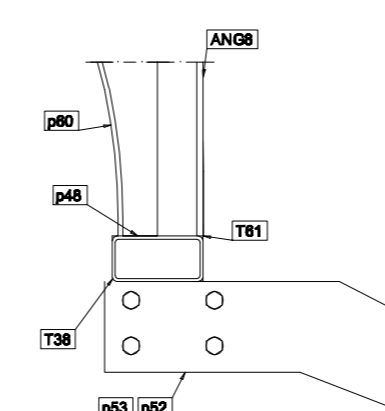


Nodo bordo impalcato - Pos. B03 - 01

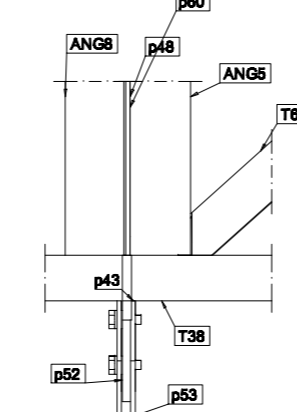
Nodo pos. B04.e



Nodo bordo impalcato - Pos. B04 - 03

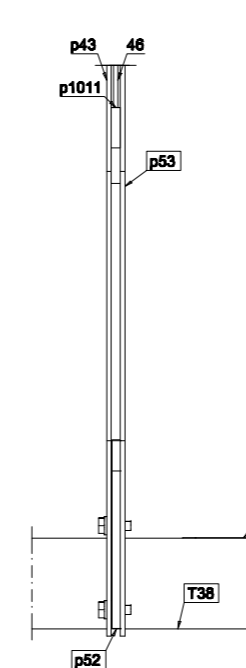


Nodo bordo impalcato - Pos. B04 - 02

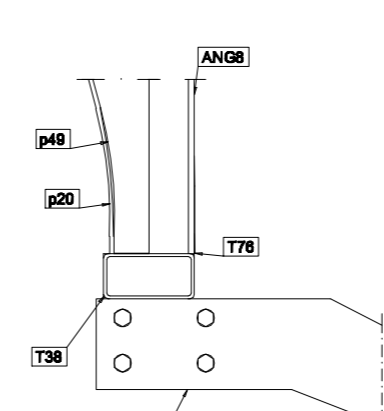


Nodo bordo impalcato - Pos. B04 - 01

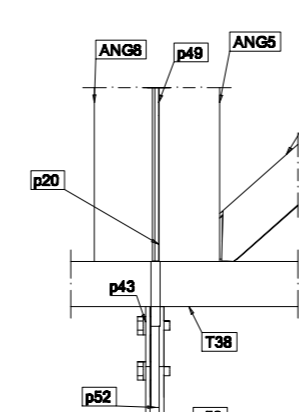
Nodo pos. B05.e



Nodo bordo impalcato - Pos. B05 - 03



Nodo bordo impalcato - Pos. B05 - 02

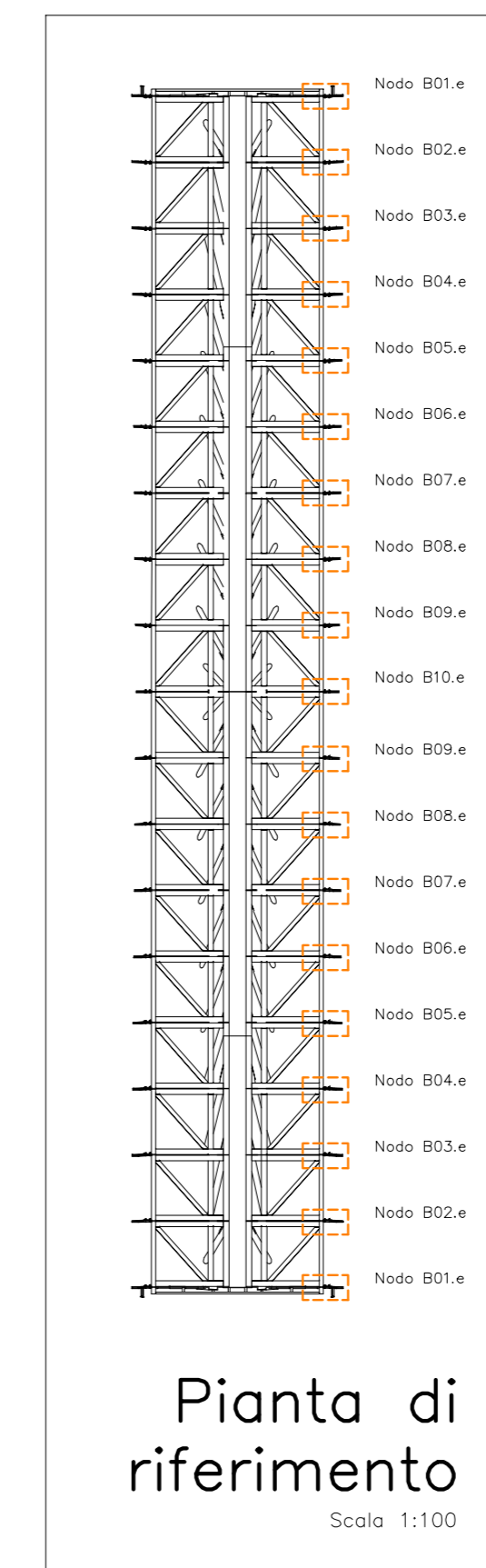


Nodo bordo impalcato - Pos. B05 - 01

Nodi a quota impalcato

Dettaglio dei nodi esterni

Scala 1:20



Pianta di riferimento

Scala 1:100

NOTA SULLE SALDATURE: In mancanza di diverse indicazioni le saldature dovranno essere realizzate in continuo su tutti gli spigoli di contatto, a cordone d'angolo o a completa penetrazione (a seconda dei dettagli di nodo)

Prima di procedere con l'esecuzione delle carpenterie, sarà onere dell'impresa verificare le misure direttamente in cantiere.

Bulloneria:

Ad alto resistenza classe 8.8 (per M12-M14) o classe 10.9 (per M16-M20)
 VITE: 8.8 secondo UNI EN 898-1:2007
 DADO: 8-10 secondo UNI EN 20898-2:1994
 ROSETTE: Acciaio CS0 UNI EN 10083-2:2006 temprato e rinvenuto HRC 32/40
 PIASTRINE: Acciaio CS0 UNI EN 10083-2:2006 temprato e rinvenuto HRC 32/40

MATERIALI (ove non specificato diversamente):

- ◆ foro #13 per M12
- foro #15 per M14
- ◆ foro #17 per M16
- ◆ foro #19 per M18
- ◆ foro #21 per M20
- ◆ foro #23.5 per M22
- ◆ foro #25.5 per M24
- ◆ foro #28.5 per M27
- ◆ foro #31.5 per M30

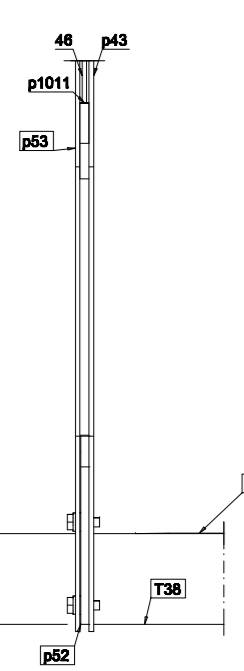
Profilati e Lamiere:

Acciaio: S235J0-S275J0-S355J0
 PROFILATI/LAMIERE secondo UNI EN 10025
 PROTEZIONE: ZINCATURA A CALDO

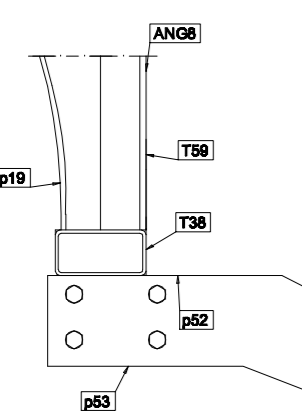
SALDATURE A CORDONI D'ANGOLO SECONDO IL SEGUENTE SCHEMA:
 $t_e \leq 1,0 t_1$ (per $t_1 \leq 2.8 t_2$ e $t_1 \leq 1.5 t_2$ del D.M. 17 gennaio 2018)

SALDATURE A COMPLETA PENETRAZIONE SECONDO IL SEGUENTE SCHEMA:
 $d \leq 1.3 t$ (per $t_1 \leq 2.8 t_2$ e $t_1 \leq 1.5 t_2$ del D.M. 17 gennaio 2018)

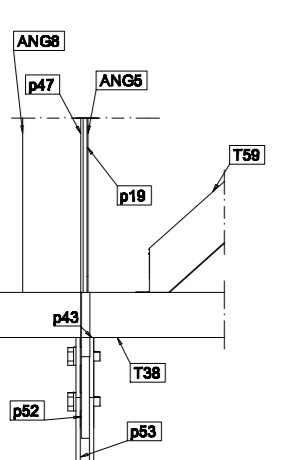
Nodo pos. B06.e



Nodo bordo impalcato - Pos. B06 - 03

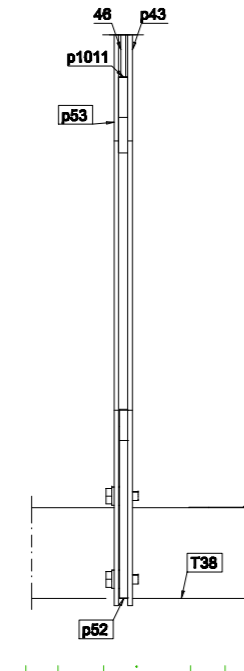


Nodo bordo impalcato - Pos. B06 - 02

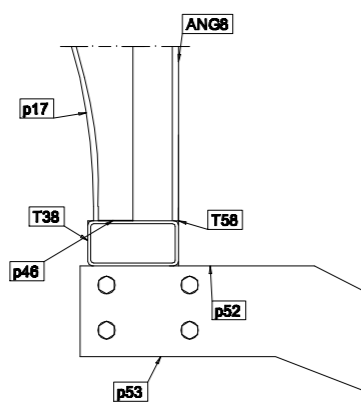


Nodo bordo impalcato - Pos. B06 - 01

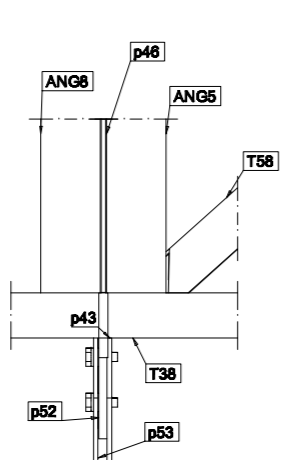
Nodo pos. B07.e



Nodo bordo impalcato - Pos. B07 - 03

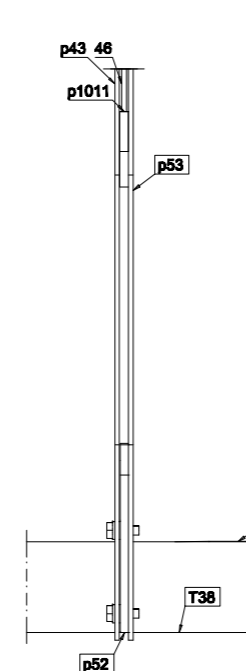


Nodo bordo impalcato - Pos. B07 - 02

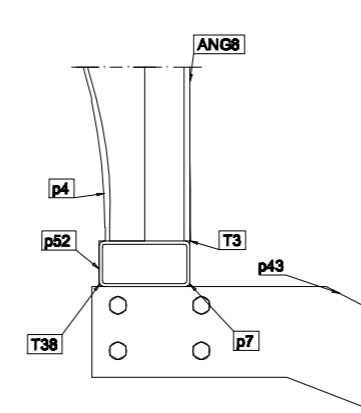


Nodo bordo impalcato - Pos. B07 - 01

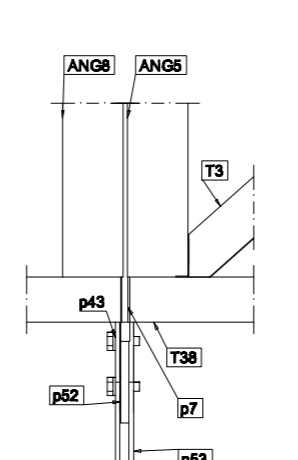
Nodo pos. B08.e



Nodo bordo impalcato - Pos. B08 - 03

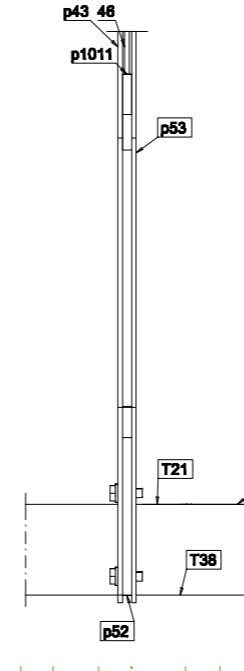


Nodo bordo impalcato - Pos. B08 - 02

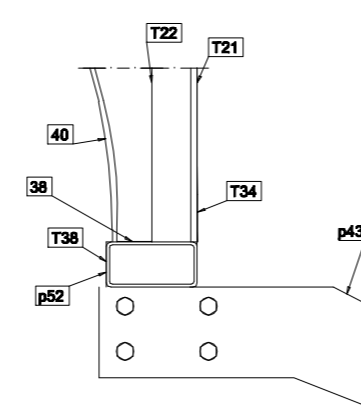


Nodo bordo impalcato - Pos. B08 - 01

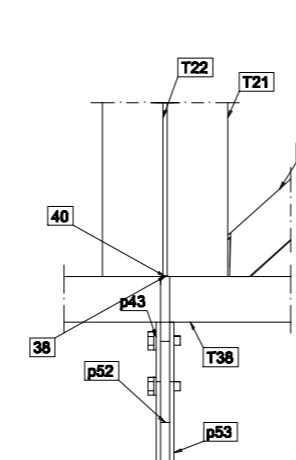
Nodo pos. B09.e



Nodo bordo impalcato - Pos. B09 - 03

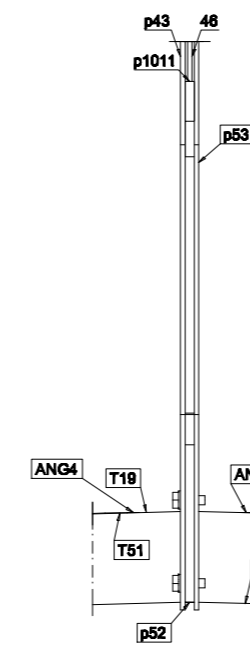


Nodo bordo impalcato - Pos. B09 - 02

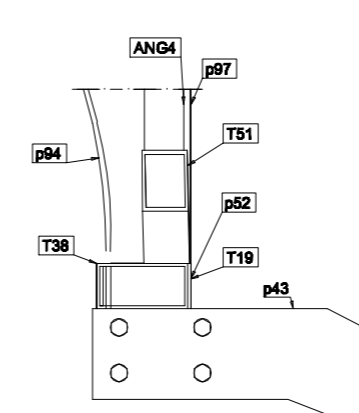


Nodo bordo impalcato - Pos. B09 - 01

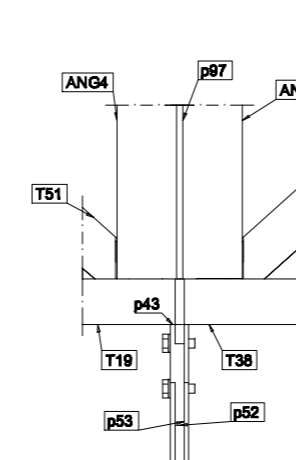
Nodo pos. B10.e



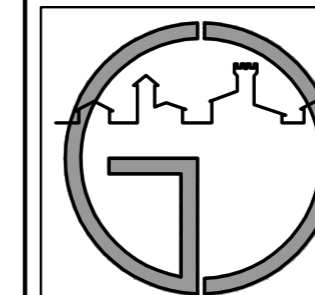
Nodo bordo impalcato - Pos. B10 - 03



Nodo bordo impalcato - Pos. B10 - 02



Nodo bordo impalcato - Pos. B10 - 01



Ing. Giovanni Corti
 INGEGNERE CIVILE

T 0577 93743 | C 336 6950168 | e-mail info@giovannicorti.com | pec: giovannicorti@ingpec.eu
 Via Monte Sabotino n. 40 - 53054 POGGONSI (SI) | CF CRTGN469H2AG782D | P.A. 0091679020



Finanziato dall'Unione europea
 NextGenerationEU



Comune di Certaldo



PROGETTO:

INTERVENTO DI ADEGUAMENTO STATICO E SISMICO DELLA PASSERELLA PEDONALE SUL TORRENTE AGLIENA TRA VIA TRENTO E VIA B. CIARI

Progetto ESECUTIVO

SCALA: 1:20/1:100
 DATA: Marzo 2022

COMUNE	Certaldo	TAV.	S31.2
LOCALITA'	Via B. Ciari - Via Trento		
STAZ. APPALTANTE	Comune di Certaldo		
ELABORATO	IMPALCATO Campata "B" - Dettaglio dei nodi Nodi sul bordo esterno a quota impalcato		
STAZ. APPALTANTE	COMSTRUTTORE	PROGETTISTA	DIRETTORE LAVORI
Comune di Certaldo		Ing. Giovanni Corti	